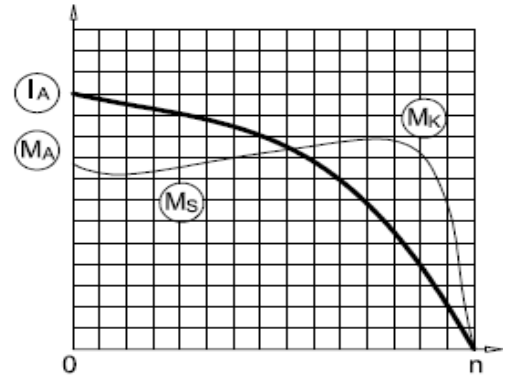


AGM 80 6b

3-Phase 230/400 V 50 Hz

Duty Type : S1
 Degree of protection : IP 55 (TEFC)
 Insulation class : F (155 °C)
 Temp rise : Class B (80K)
 Mounting Design : B3



ELECTRICAL DESIGN

Direct On Line

Rated output (kW) : 0.55
 Speed (rpm) : 890
 Rated current (A) : 1.5
 Torque – Mn (Nm) : 5.9
 Cos φ : 0.75
 Efficiency % : 70.4 (4/4), 70.3 (3/4), 68.2 (1/2)
 Moment of inertia J (kgm)² : 0.0022

Locked rotor Current – Ia (A) : 5
 Ia / In : 3.5
 Locked rotor Torque – Ma (Nm) : 11
 Ma / Mn : 1.9

Y / Δ Starting

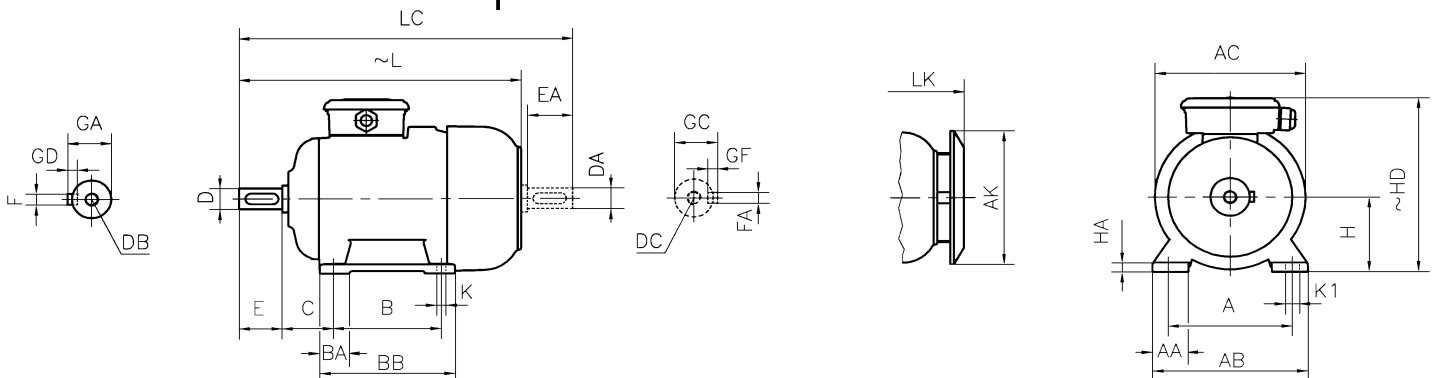
Locked rotor Current – Ia (A) : -
 Ia / In : -
 Locked rotor Torque – Ma (Nm) : -
 Ma / Mn : -
 Breakdown Torque – Mk (Nm) : 12
 Mk / Mn : 2.0

MECHANICAL DESIGN

Frame : Aluminium
 End shields : Aluminium
 Cooling fan : Plastic
 Terminal box : Plastic
 Cable gland : Pg 16
 No of cable glands : 1

Bearing Arrangement

	Drive End	Non Drive End
Standard design	6204 ZZ	6204 ZZ
Reinforced design	-	-
Noise Level (dB-A)	: 43	
Paint	: RAL 7031- Grey	
Approximate weight (kg)	: 9.4	



DIMENSIONS

Dimensions of foot mounted motors for mounting arrangement : B3, B6, B7, B8, B15, V5, V6																							
H	HD	HA	A	AA	AB	ØAC	ØAK	K	K1	B	B'	BA	BA'	BB	L	LC	LK	C	E	DB	ØD	GA	FxGD
~	~													~		~		EA	DC	ØDA	GC	FAXGF	
80	198	10	125	38	160	156	151	10	15	100	-	33	-	125	279	324	308	50	40	M6	19	21.5	6X6

* Efficiencies are calculated according to indirect method where the additional load losses are determined from exact measurements at different load points.